



Safety Solutions for Smart Cities

Avigilon provides end-to-end security solutions that cover more areas with fewer cameras, helping cities foster citizen safety and enabling faster investigations while being conscious of public budgets.

Powerful Search

Avigilon Appearance Search™ technology allows you to sort through hours of video with ease to quickly locate a specific person or vehicle of interest across all cameras and sites in real-time.

Real-time Notification

Our large portfolio of cameras ensures monitoring will be present day or night. Our self-learning video analytics provide instant alerts of events to police, helping to improve response times in active situations.

Quick Action

ACM™ generated door events allow you to create rule-based actions and notifications for quick on-site responses, including immediate lockdown.

Streamlined Identification

Avigilon HD License Plate Recognition (LPR) accurately captures license plates regardless of lighting conditions, helping aid in traffic law enforcement and toll collection.

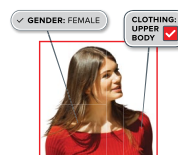
Easy Integration

Avigilon solutions are built on an open platform, allowing you to leverage previous 3rd-party investments that are ONVIF® compliant and expand existing command centres to ensure city safety.

Efficient Bandwidth Management

Avigilon High Definition Stream Management (HDSM)™ and HDSM SmartCodec™ technologies reduce bandwidth and storage needs while maintaining image quality.

Avigilon Solutions for Government



Avigilon Appearance Search Technology

A sophisticated AI search engine that helps you quickly identify a specific person or vehicle and track their route throughout a site in real-time or during investigations.



Self-learning Video Analytics

Recognise and detect the movements of people and vehicles, notifying operators of events that may need further investigation.



Access Control Manager (ACM) System

Works together with ACC™ software to produce action-based alarms, and notifications so you can respond quickly to events.

H4 IR PTZ Camera Line Combines Avigilon patented self-learning video analytics with zoomable infrared (IR) technology to provide broad coverage and exceptional image quality in a range of lighting conditions and environments.

H4 Edge Solution (ES) Camera Line Provides an all-in-one intelligent surveillance solution that is perfect for remote location and records video directly to an onboard solid-state drive.

License Plate Recognition (LPR) Captures license plates in a variety of conditions, day or night.

Avigilon, a Motorola Solutions company, designs, develops, and manufactures video analytics, network video management software and hardware, surveillance cameras, and access control solutions.

- 24/7 technical support by phone or online chat
- Complimentary software training

For more information, asksales@avigilon.com